



UNICAMP



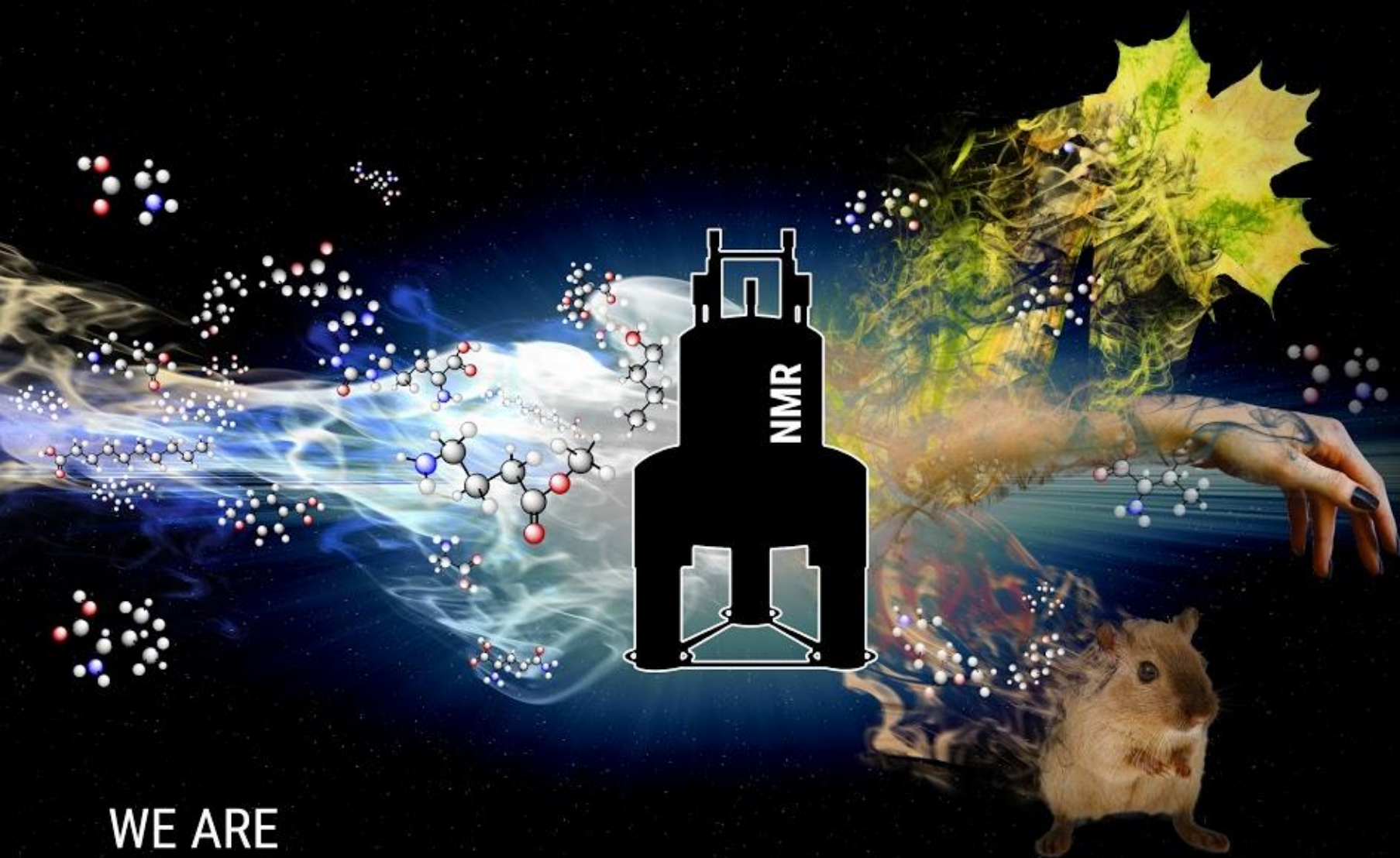
6th Bioanalytical School – INCT Bioanalítica

November 28-30, 2018. Londrina, PR, Brazil

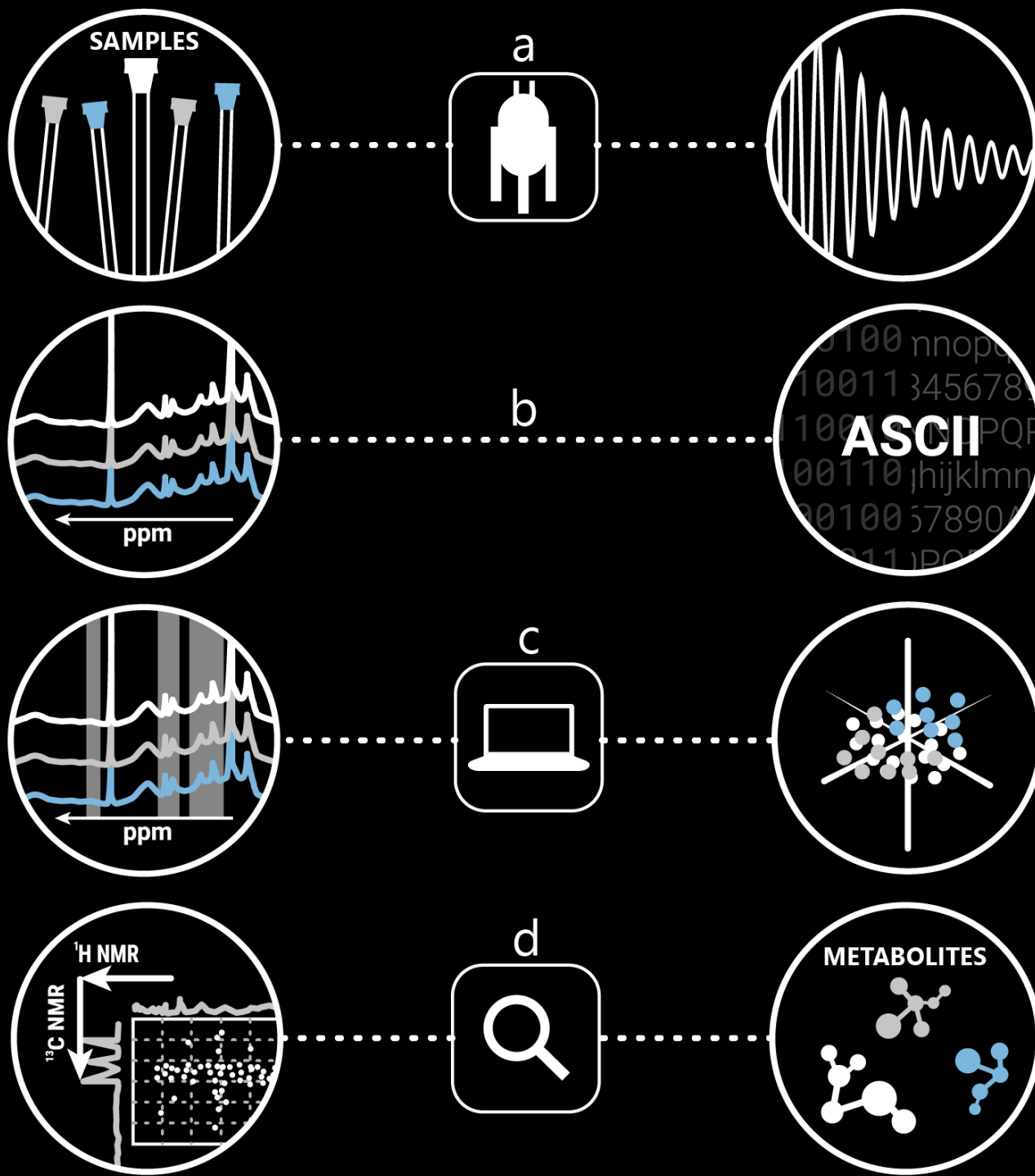
LJUBICA TASIC

APPLICATION OF NMR SPECTROSCOPY IN STUDIES OF HUMAN, ANIMAL AND PLANT DISEASES





WE ARE
METABOLITES

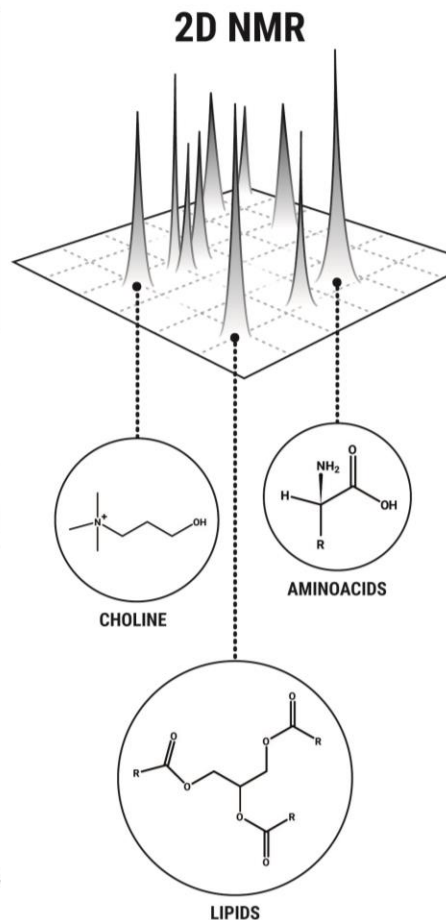
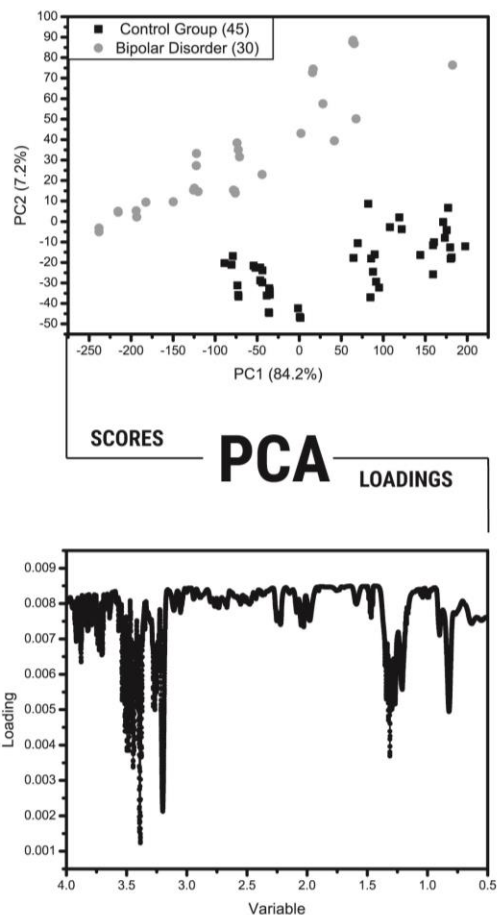
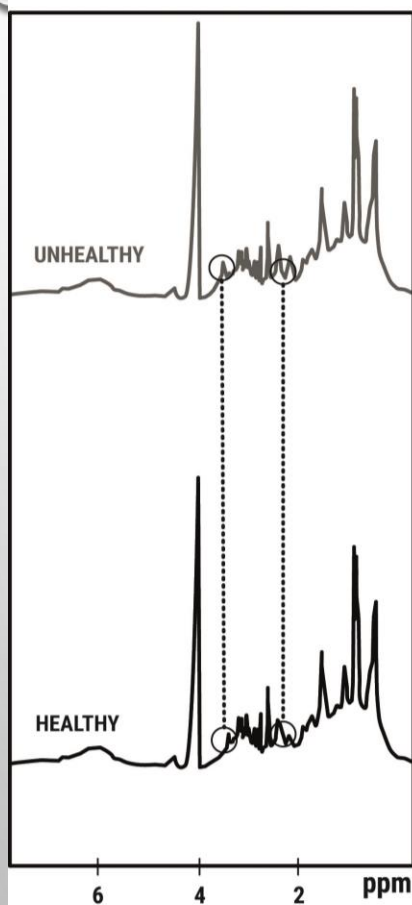


METABOLITES

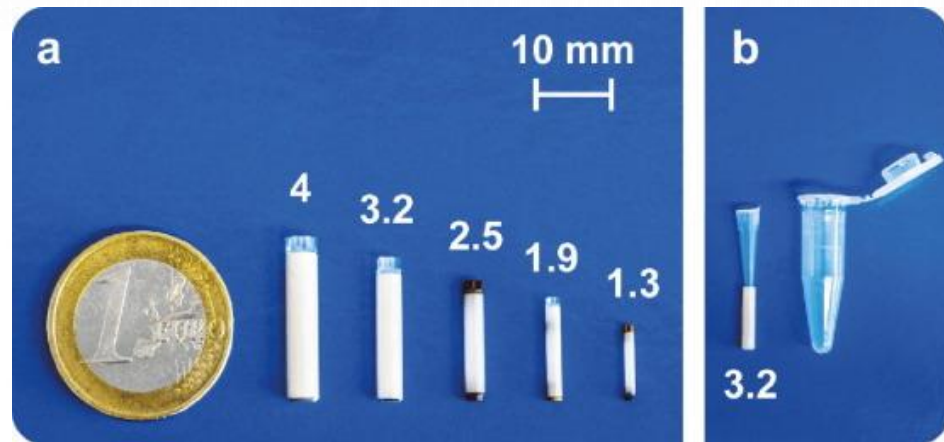
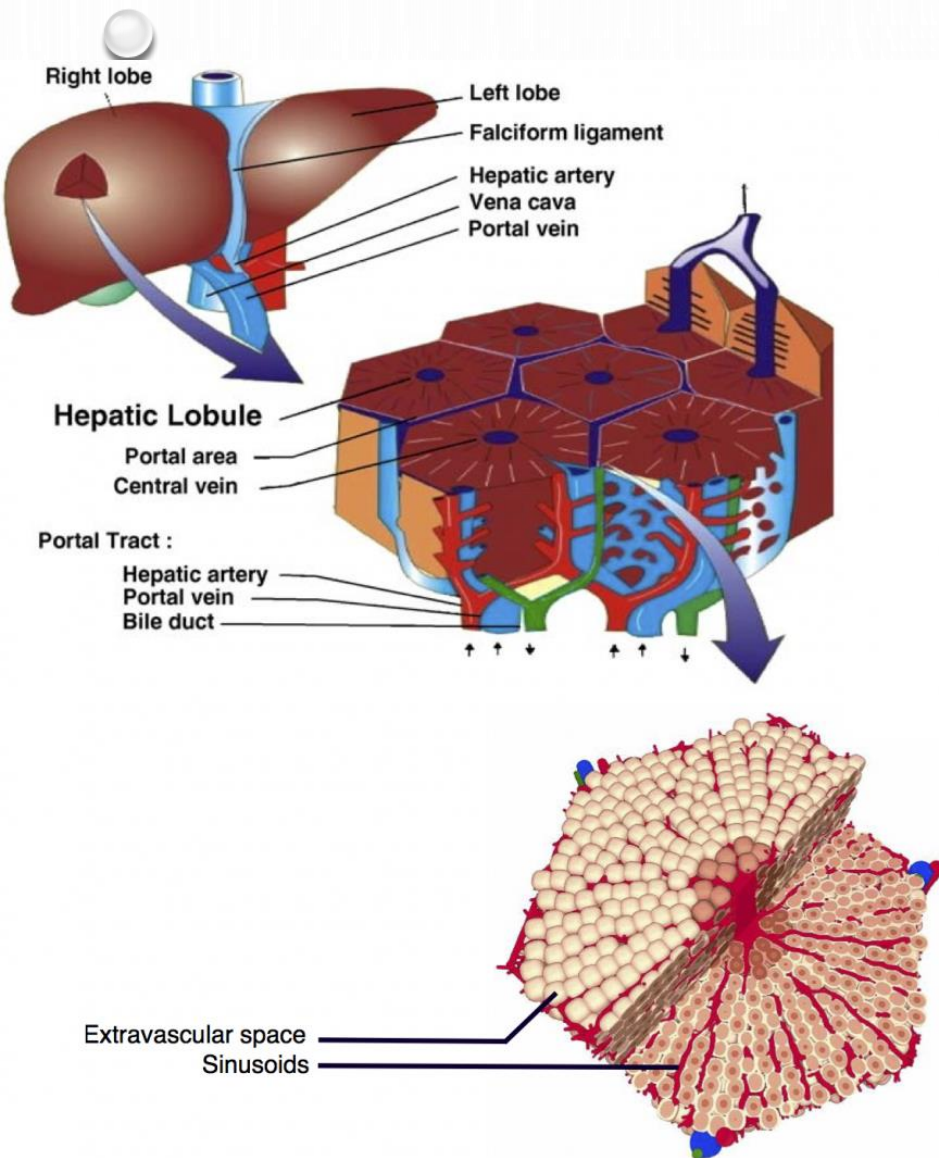
- PLANTS
- ANIMALS
- HUMAN DISEASES
 - PSYCHIATRIC PROBLEMS: MENTAL DISORDERS
 - SCZ, BIPOLAR, CRACK-COCAINE ADDICTION
 - CANCER RESEARCH – YOUNG CHILDREN CANCER, INFANCY
 - OSTEOSARCOMA
 - NEPHROBLASTOMA – WILMS TUMOR (KIDNEYS)
 - HEPATOBLASTOMA - LIVER CANCER – CHILDREN YOUNGER THAN 3 YEARS OLD
 - GLIOBLASTOMA

Anal. Methods **2017**, 9, 1078-1096.

Biomarkers – NMR liquid state



BIOMARKERS – SEMISSOLID NMR





PLANT DISEASES – ORANGES

Xanthomonas axonopodis pv. *citri*

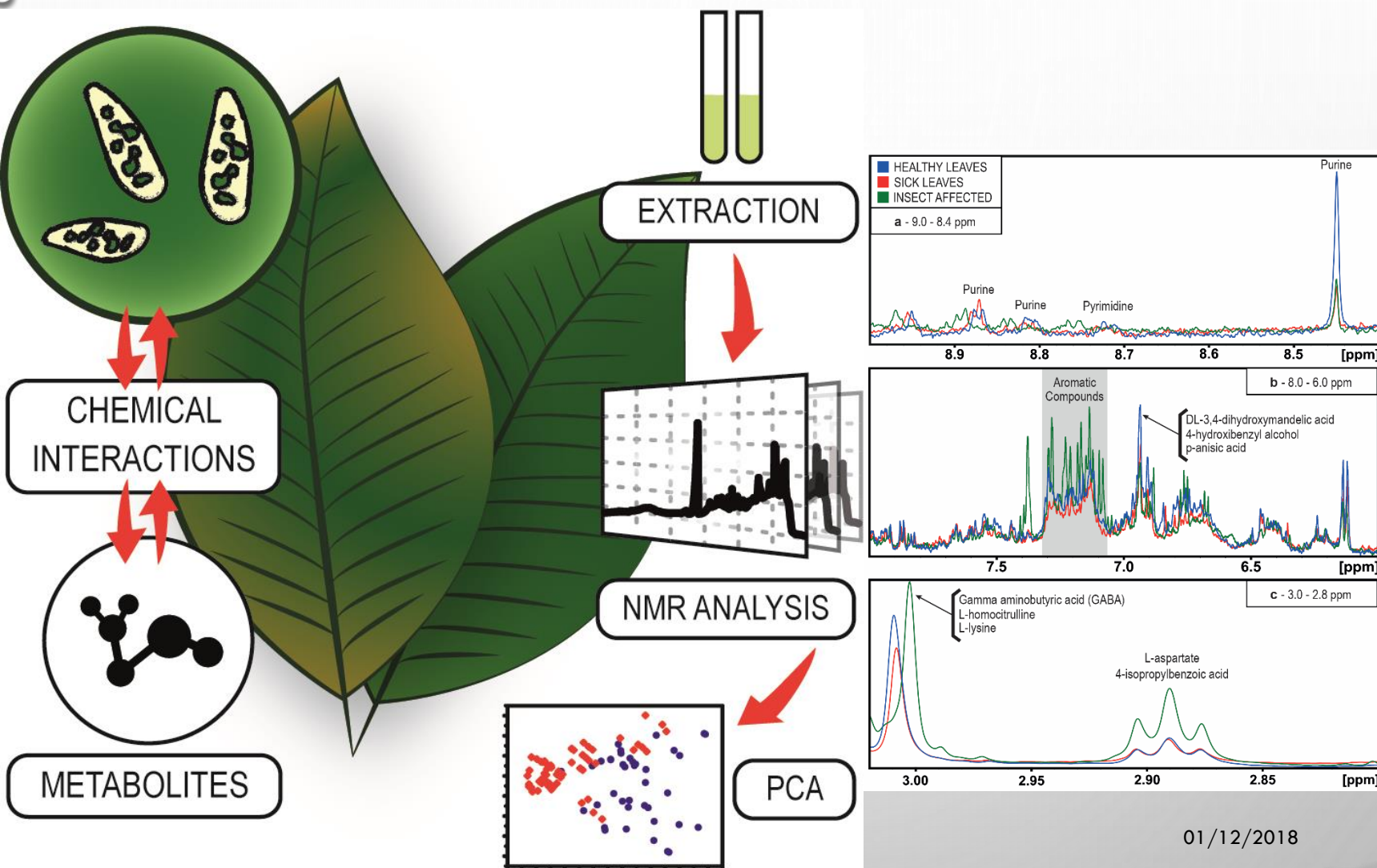
Xyllela fastidiosa

Liberibacter Candidatus Asiaticus (Clas)

01/12/2018

7

Liberibacter Candidatus Asiaticus



01/12/2018

8

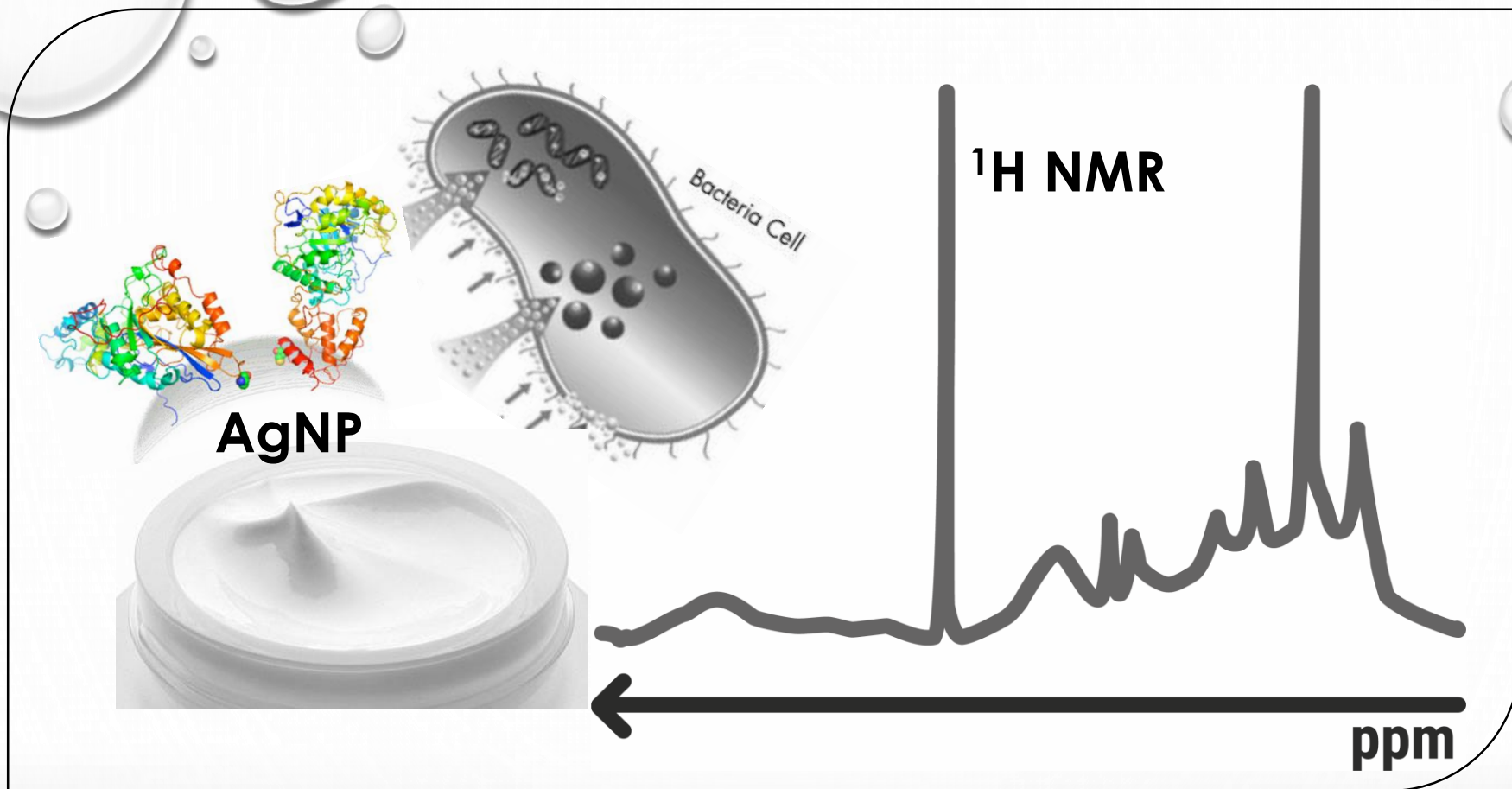
ANIMAL DISEASES



Corynebacterium pseudotuberculosis
(*Corynebacterium ovis*)

01/12/2018

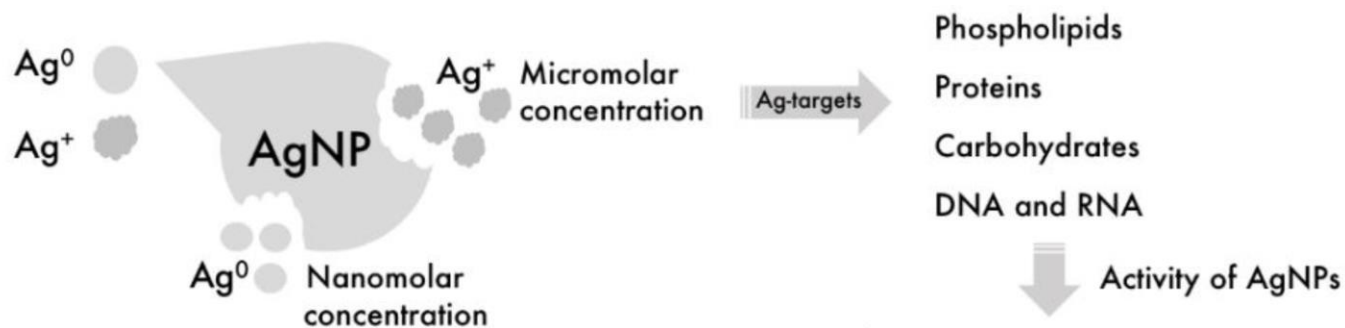
9



Biogenic nanosilver in a pharmaceutical cream for wound healing in animal and human healthcare.

Pontes, J. et al., *Metabolomics* (Los Angel) **2017**, 7, 2.

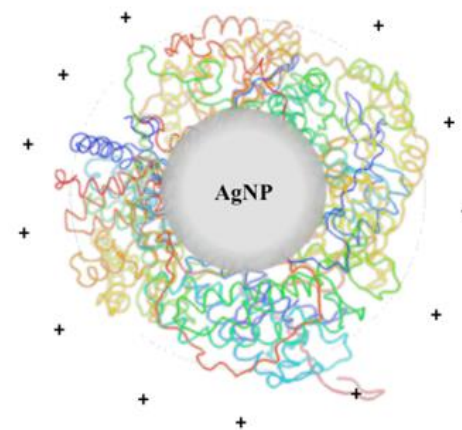
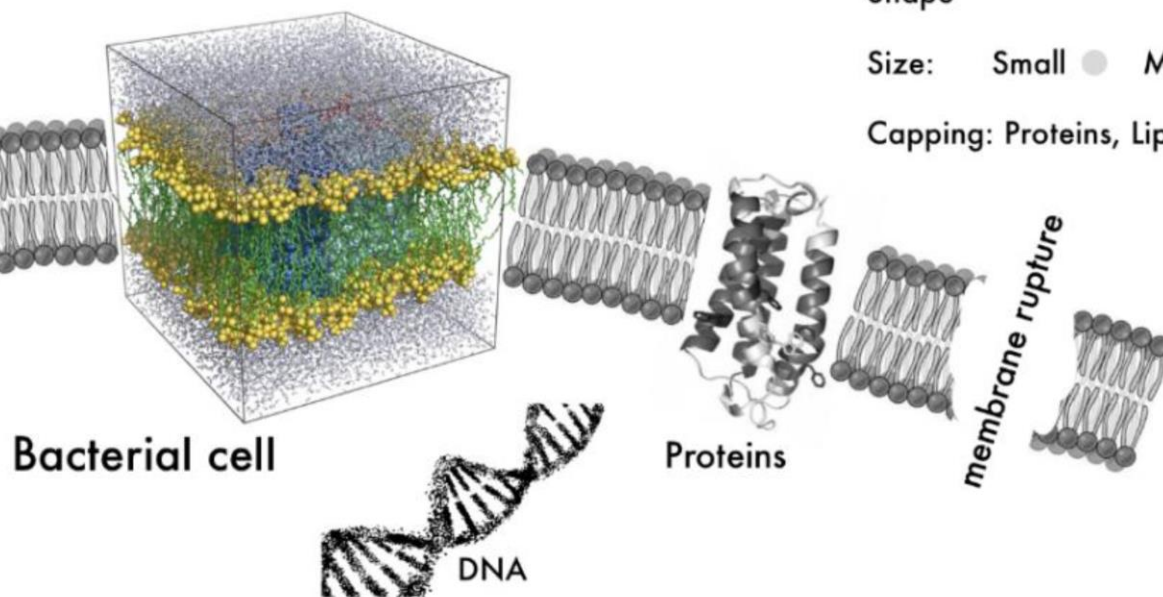
Stanisic et al., *RSC Advances* **2018**, just accepted



Shape

Size: Small Medium Large

Capping: Proteins, Lipids, Carbohydrates, other compounds



C. pseudotuberculosis

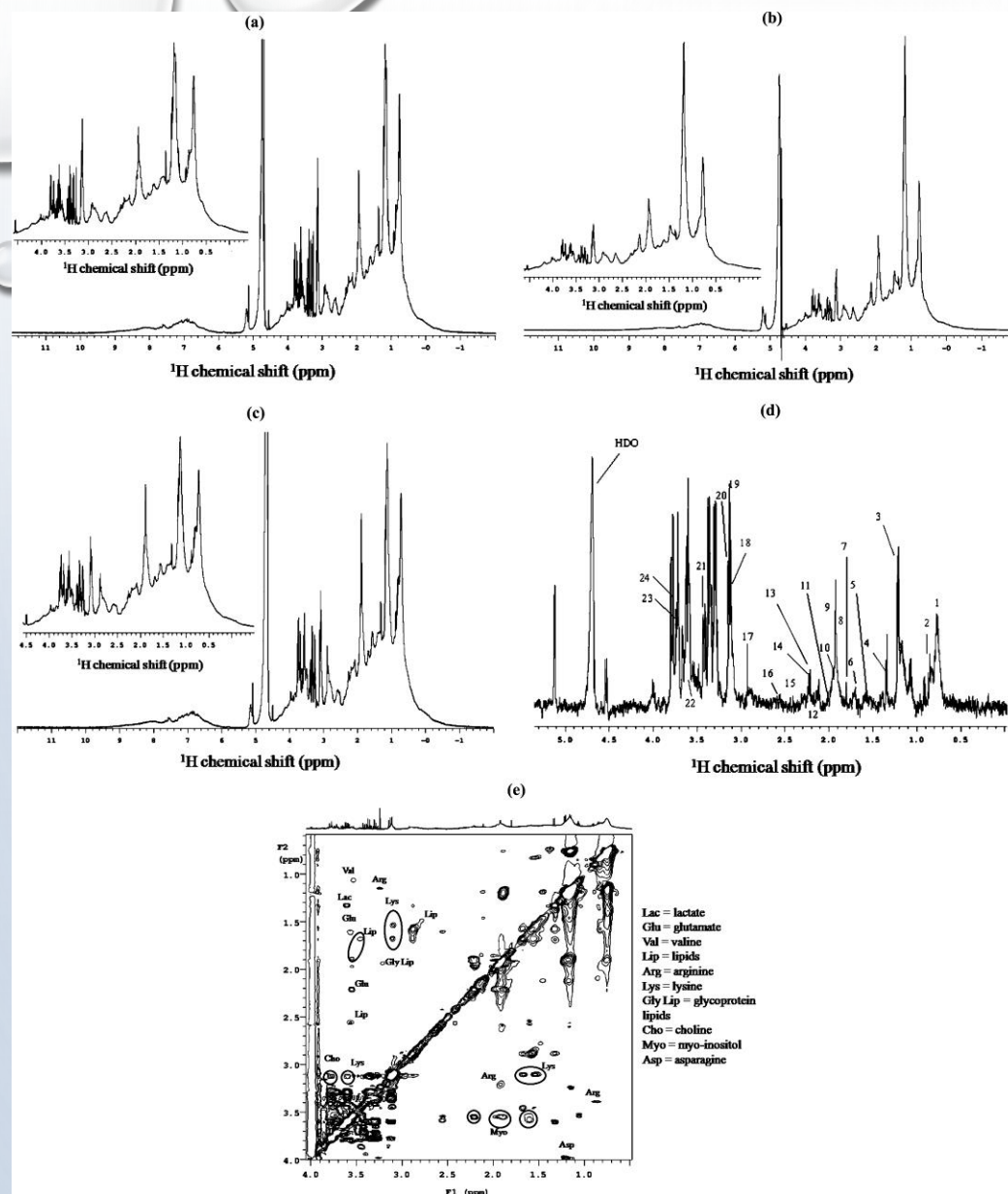




MENTAL DISORDERS

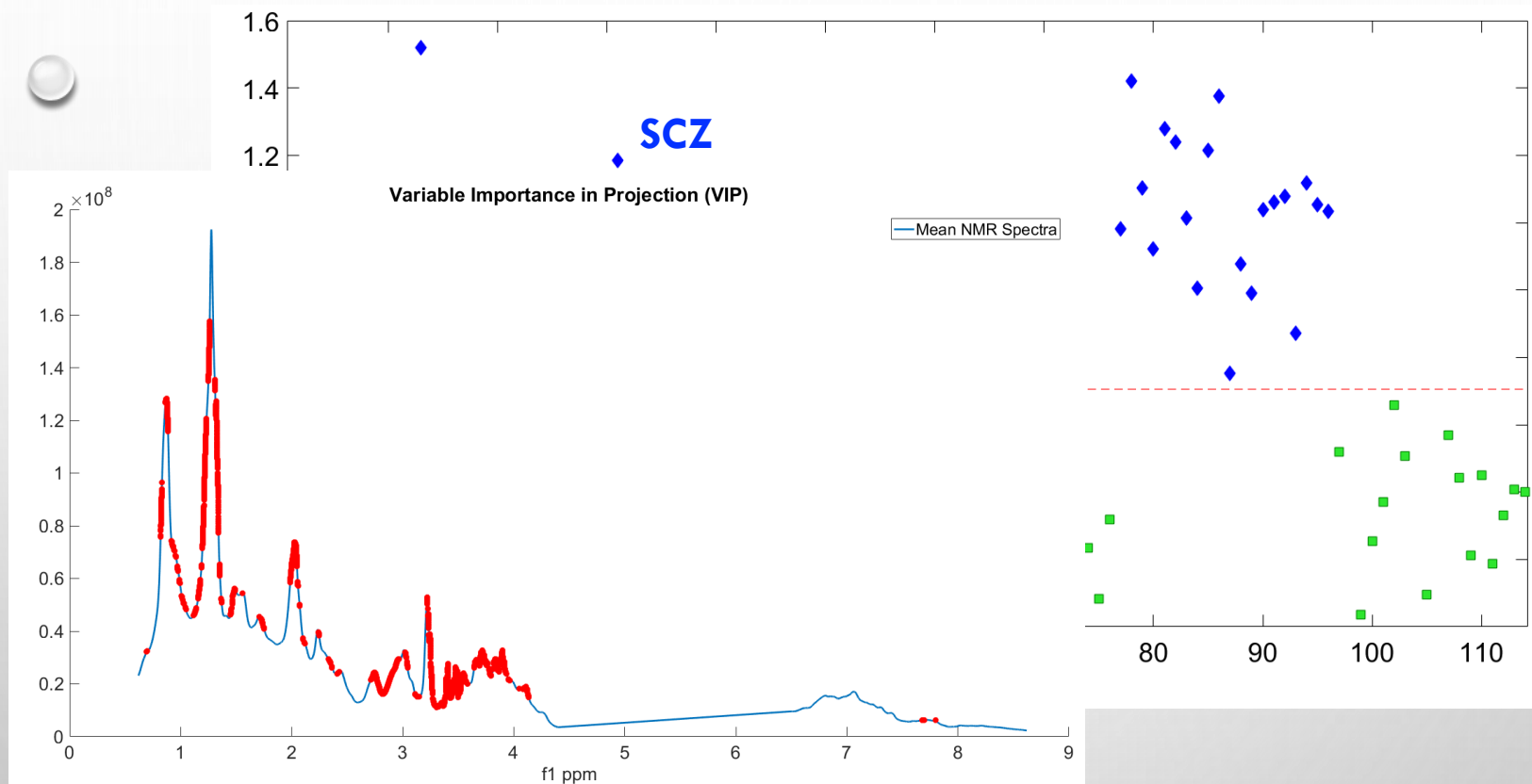
01/12/2018

13



^1H NMR spectra for a blood serum sample of (a) a control subject, (b) a bipolar disorder patient treated with lithium, and (c) a bipolar disorder patient not treated with lithium. The expanded -0.5 to $+4.4$ ppm region used in chemometrics is shown in the upper left corners (a–c). The peak assignments described in Table 3 are shown in (d) on the T2-edited spectrum of a control sample. (e) ^1H – ^1H TOCSY NMR spectrum of human blood serum recorded (control sample) using MLEV-17 as a spin-locking scheme with a mixing time of 90 ms. Some important metabolites are indicated.

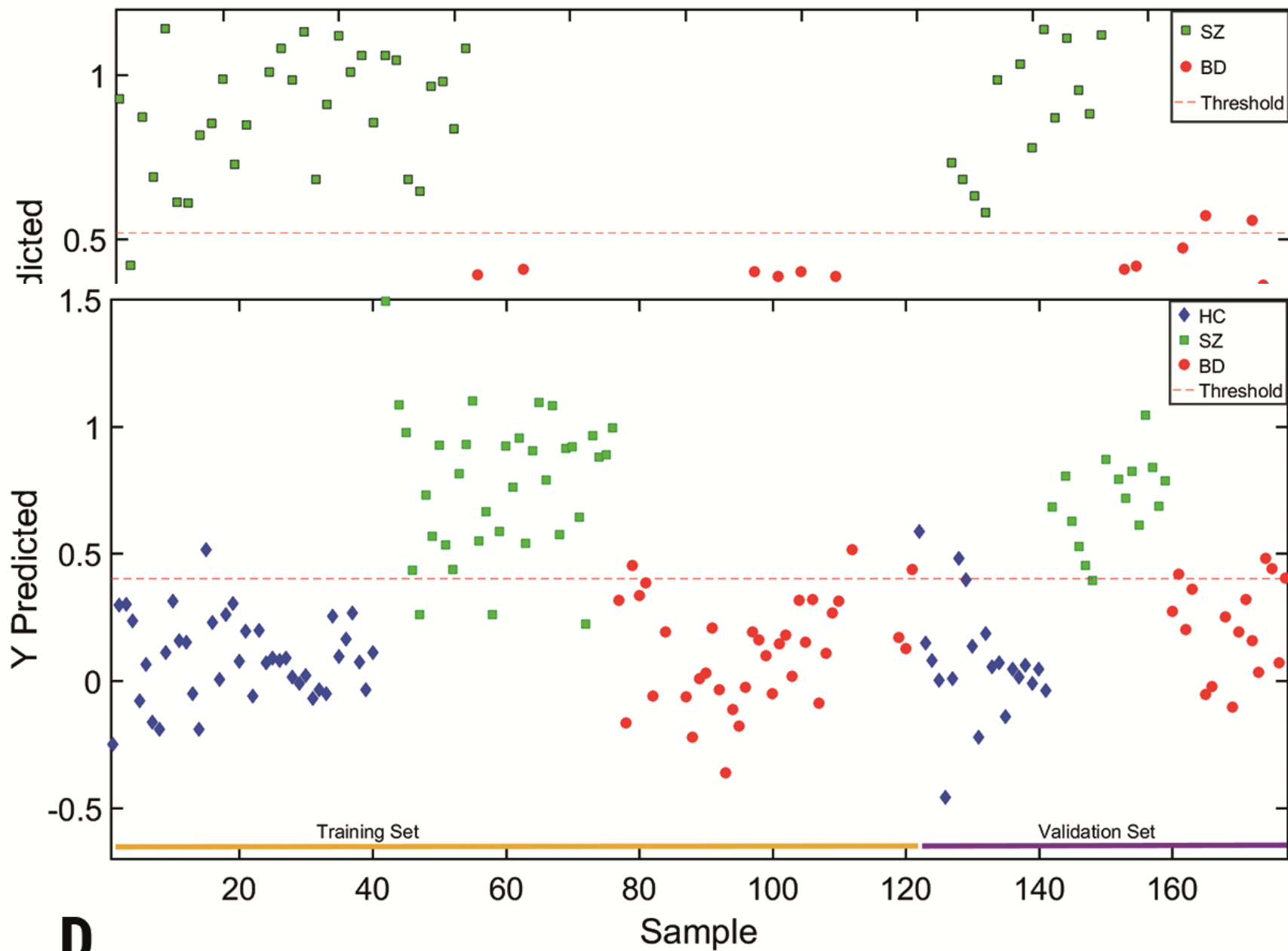
PLS-DA



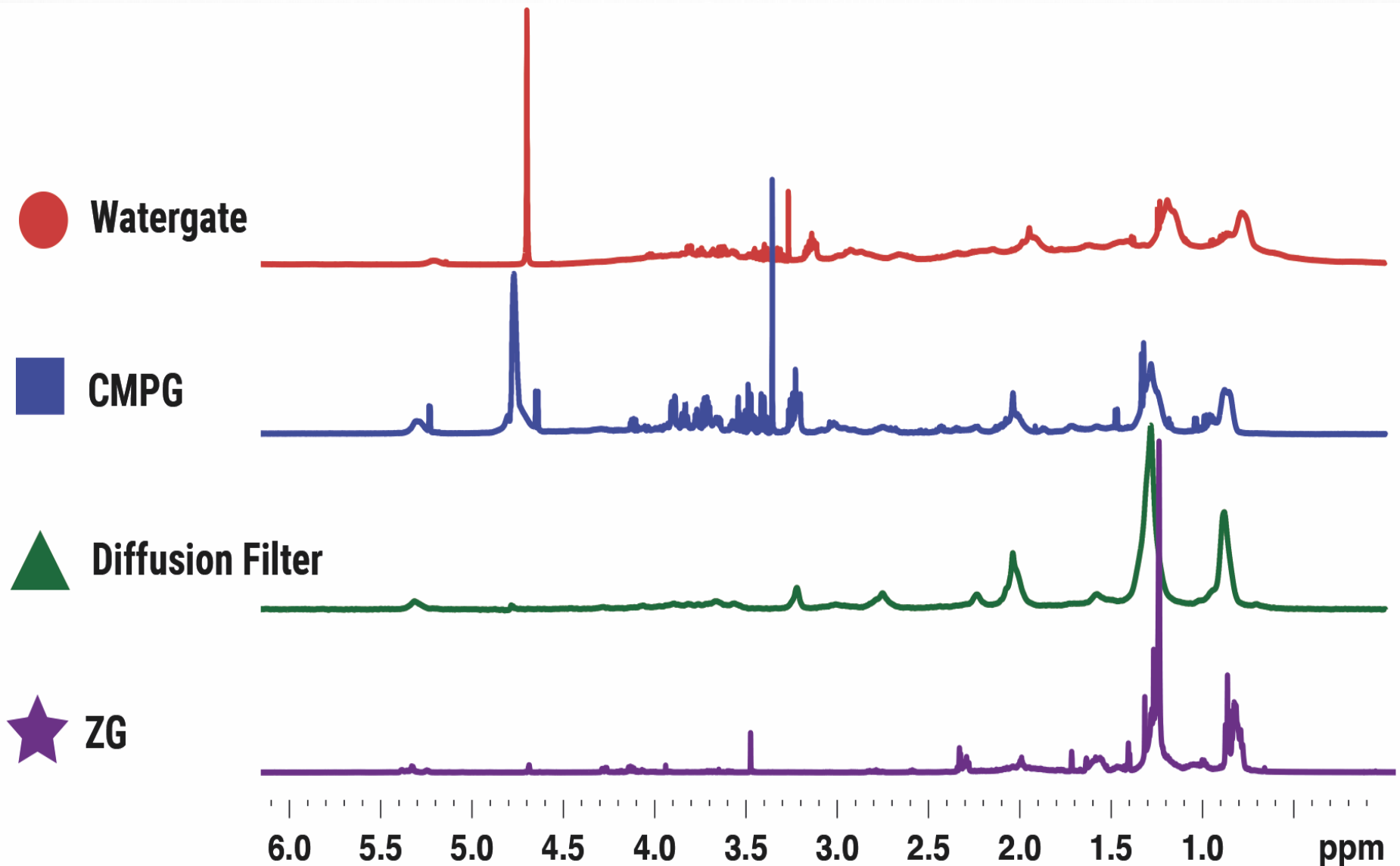
Tasic *et al.*, *Chemistry Select* **2017**, 2, 2927-2930. DOI: 10.1002/slct.201700009

Tasic *et al.*, *Schizophrenia Research* **2016**, DOI: 10.1016/j.schres.2016.12.024

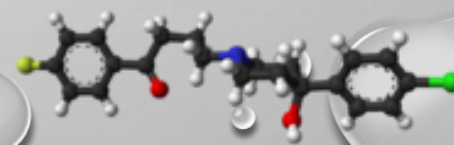
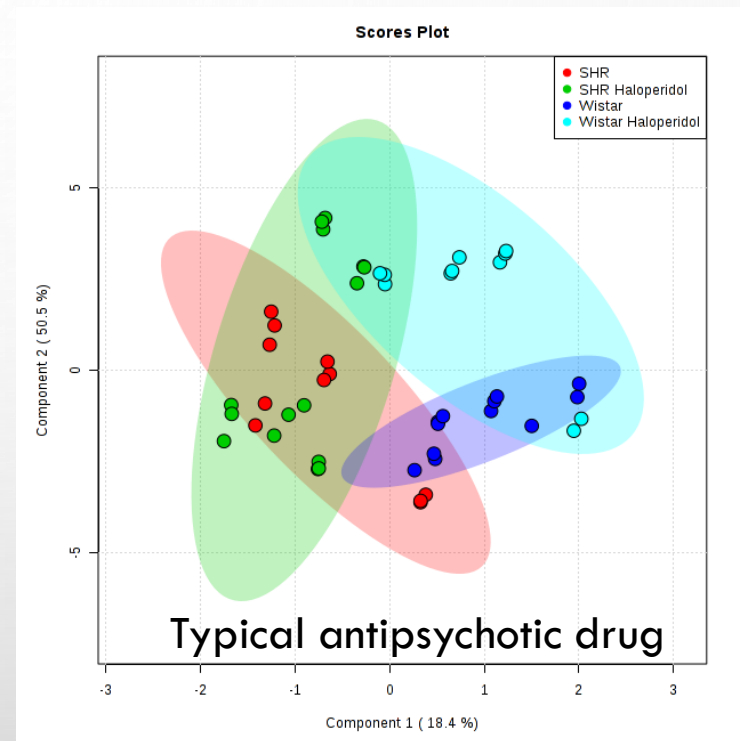
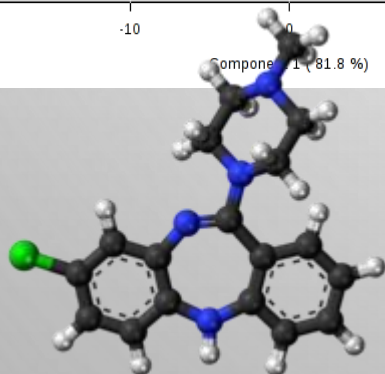
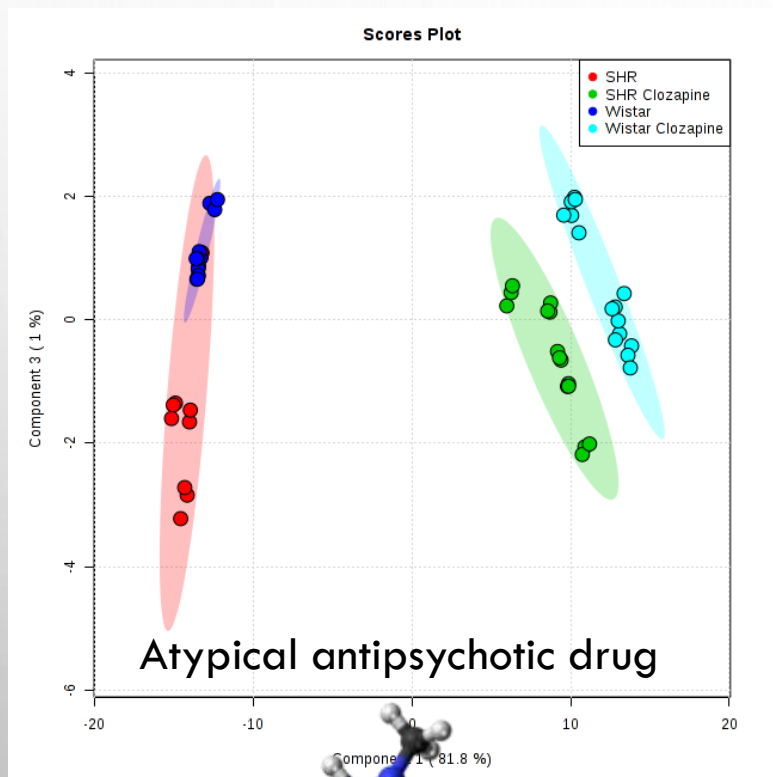
Tasic *et al.*, **BR 10 2015 031930**, data de depósito: **18/12/2015**, INPI - Instituto Nacional da Propriedade Industrial.



LIPIDS, METABOLITES & NMR



SCZ LIPIDOMICS



ANIMAL MODELS

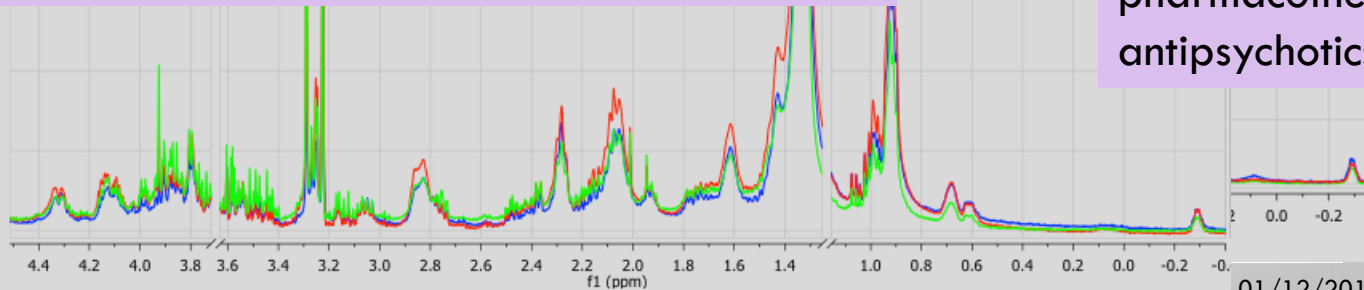
Haloperidol – TAD - 50 $\mu\text{g mL}^{-1}$
Clozapine – AAD - 150 $\mu\text{g mL}^{-1}$

Worms were then fixed in 1% paraformaldehyde (PFA) solution, and washed 5 times in distilled water followed by 5 washes in deuterium oxide. The worms were kept frozen at $-80\text{ }^{\circ}\text{C}$ until the nuclear magnetic resonance (NMR) experiments.

wt

null-knockout worms for
nud-1 or *nud-2*

behavioral response to the
pharmacotherapy with
antipsychotics

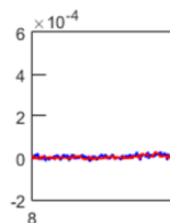
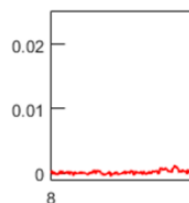
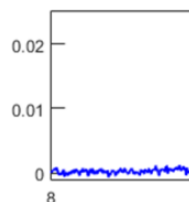


nematode *Caenorhabditis elegans*

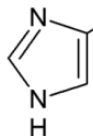
01/12/2018

19

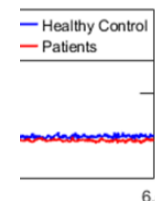
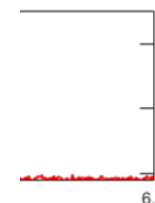
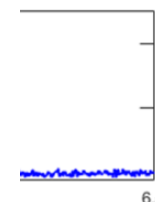
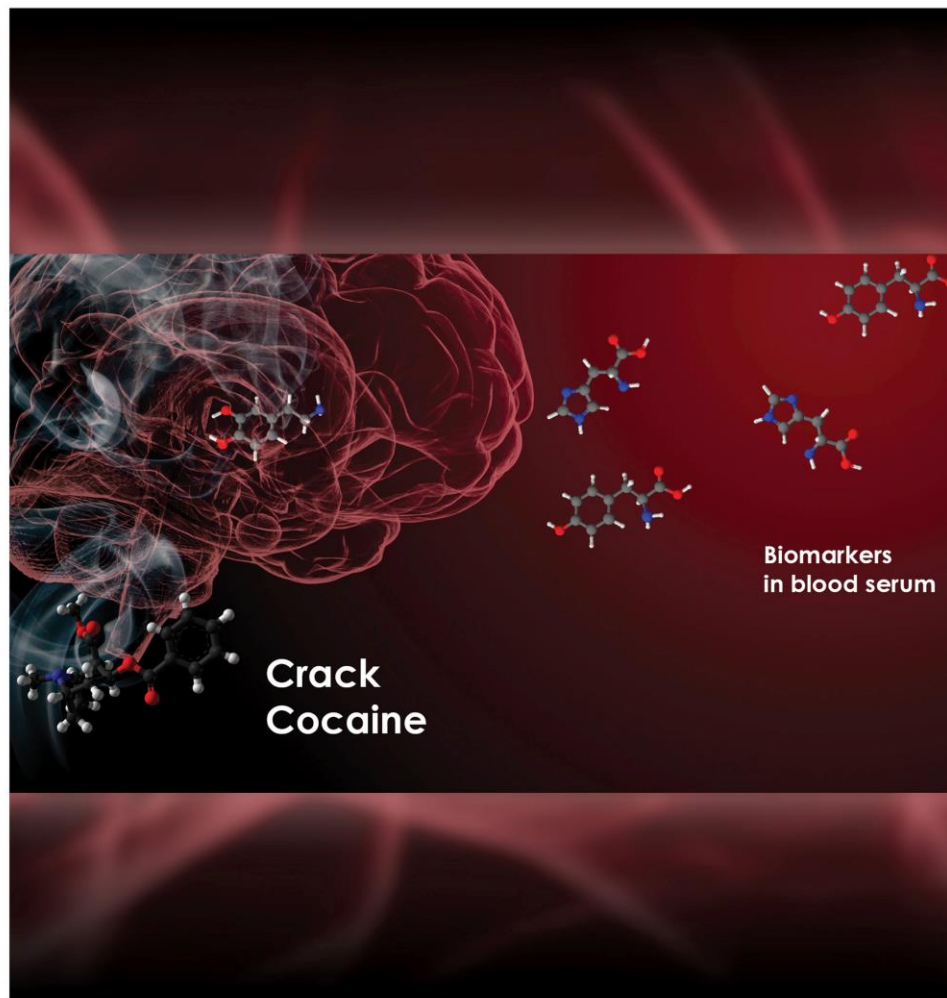
A



B



I

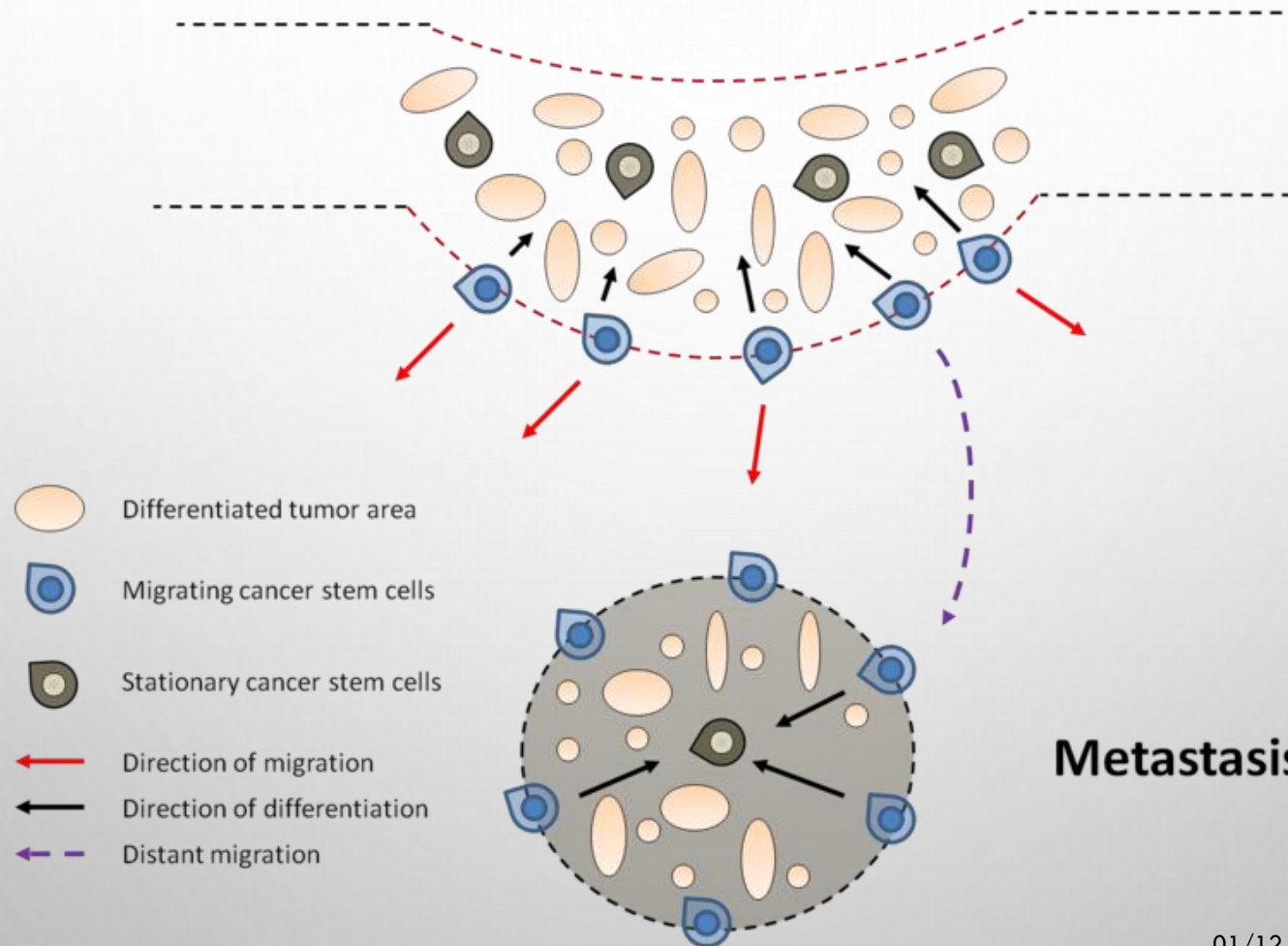


P

IC

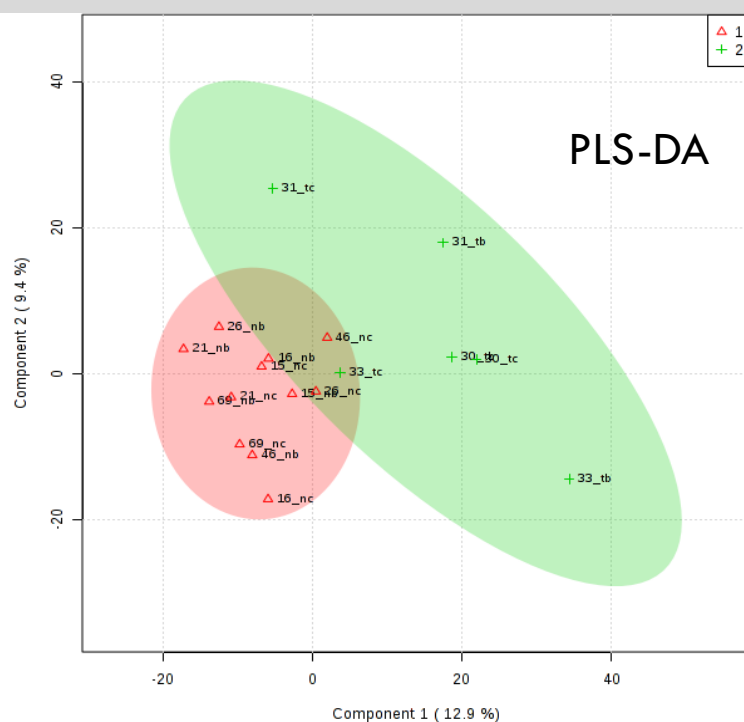
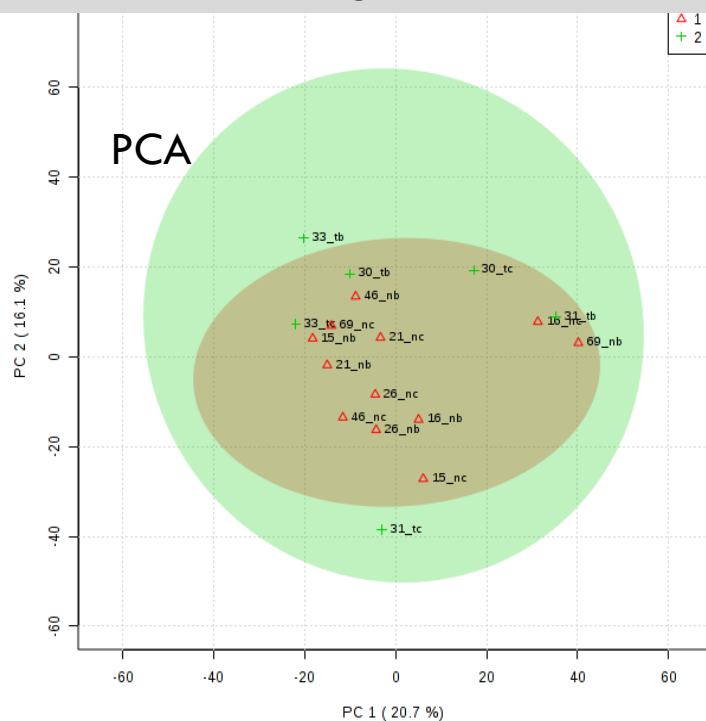
CANCER RESEARCH

Carcinoma



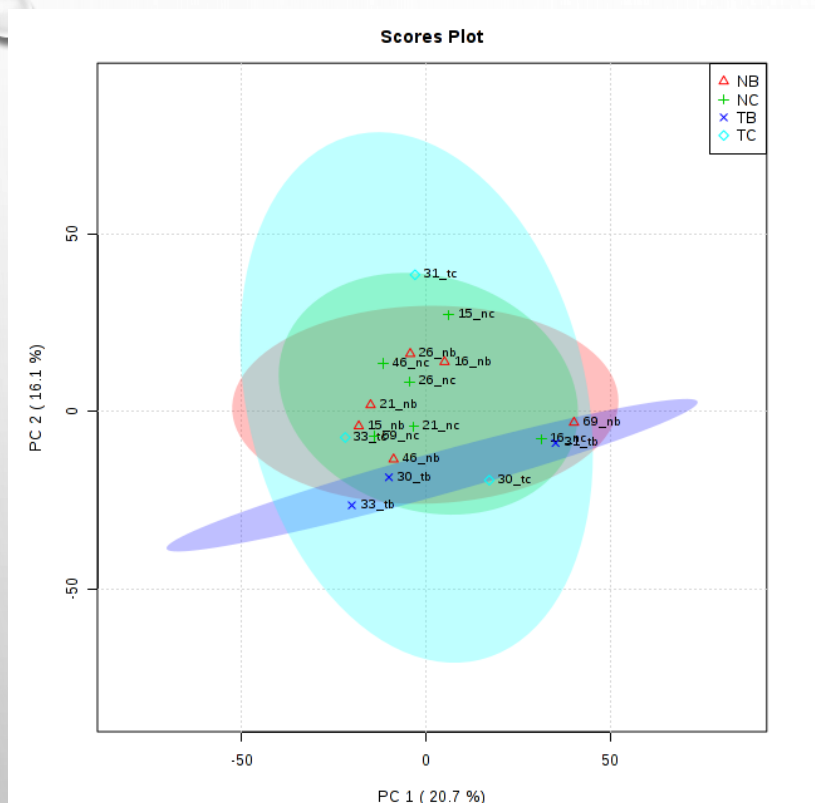
HEPATOBLASTOMA TISSUE METABOLOMIC PROFILING BY HR-MAS NMR

T_2 -editted 1H NMR (CPMG) data of healthy (1, red) and tumor affected liver tissues (2, green).



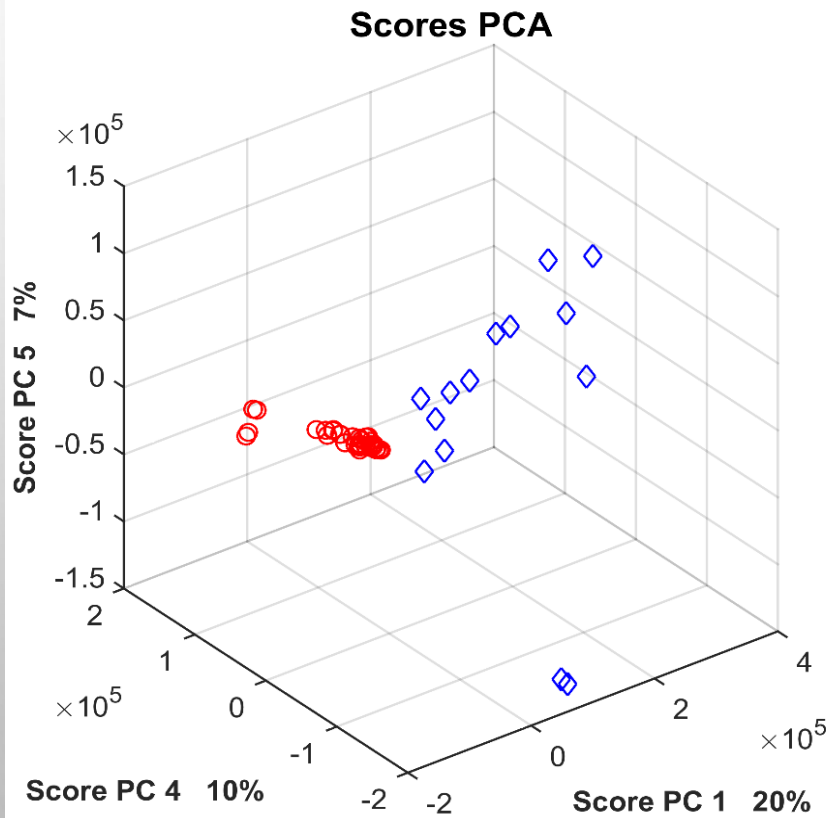
δ 2.09, δ 2.10, δ 3.60, δ 7.10, δ 8.50

HEPATOBLASTOMA



Score-graphs of principal components analysis (PCA - left) and partial least squares discriminant analysis (PLS-DA - right) performed with the T₂-edited ¹H NMR (CPMG) data of liver samples. Tumor Border (TB), Tumor Center (TC), Healthy Liver Border (NB), Healthy Liver Sample (NC).

OSTEOSARCOMA



Classification parameters obtained for PLS-DA model after LOOCV.

CPMG

Sensitivity

100.00

Specificity

92.00

Accuracy

98.00

WATERGATE

Sensitivity

95.00

Specificity

100.00

Accuracy

96.22

OSTEOSARCOMA

18 cases (9 females and 9 males) with samples from tumor and peripheral blood prior to any systemic treatment (chemotherapy or radiotherapy). Pediatric patients aged between 11 and 20 years ($n = 15$) and three patients were adults.

Alterations in the metabolism of methyl branched-chain fatty acids in VLDL and LDL are associated to CH_3 and CH_2 and lipids $=\text{CH}-$ and $-\text{CH}_2$, as well as with some aromatic amino acids (Tyr, His, Phe).

Lipids are not having just a passive lipid storage depot but could have a dynamic role in energy balance of the cells.

Somos metabólitos

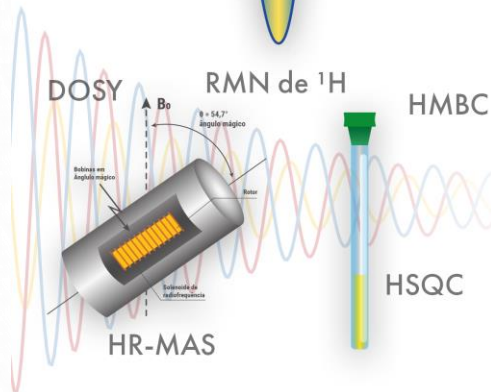
Como a metabolômica e a espectroscopia de ressonância magnética nuclear podem ajudar a revolucionar o modo como doenças são diagnosticadas e monitoradas

DOENTE
SAUDÁVEL ou
ASSINTOMÁTICO?



Amostragem

Amostras biológicas de humanos, animais, bactérias ou plantas são coletadas e preparadas para posterior análise



Análise

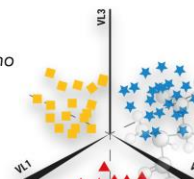
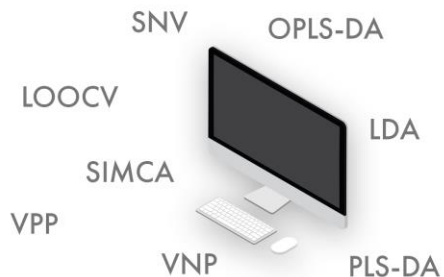
Técnicas de RMN são utilizadas para analisar as amostras

Bases de dados online

Os espectros obtidos são interpretados e associados a metabólitos por comparação com bases de dados

Quimiometria

Análises quimiométricas detectam diferenças ínfimas de concentrações de metabólitos chave, também conhecidos como biomarcadores, e separam as amostras dentro organismos **doentes**, **saudáveis** e **assintomáticos**



Dra. Melissa Quintero Escobar

Danijela Stanisic

Tássia B. B. C. Costa

Daniela Cypriano

Roney V. dos Santos

Guilherme C. F. Cruz

Natália L. Fregonesi

Stephanie Fulaz

Christiane Roseto

William Y. Ohashi

Letícia H. B. Liu

Bruna Furlan de Moraes

Carolina N. Scachetti

Pedro H. de Barros Pinto





- **UNIFESP, USP, BOLDRINI, BARRETOS**
- **FAPESP, CNPq, CAPES**

LQB: <http://labquimbio.wix.com/labquimbio>
ljubica@iqm.unicamp.br

Thank you!